



Professor  
Jack and Laura Dangermond Chair of Geography

## Biography

Trisalyn Nelson joined the Department of Geography at UCSB as Jack and Laura Dangermond Endowed Chair of Geography in 2020. From 2016-2020 she was Director of the School of Geographical Sciences and Urban Planning at Arizona State University. Prior, she was the Lansdowne Research Professor and Director of the Spatial Pattern Analysis and Research Lab at the University of Victoria, Canada.

Dr. Nelson studies a variety of phenomena from spatial ecology to cities. Currently, her research focuses on active transportation, and the use of big data and analytics to better plan cities. Nelson led the creation of BikeMaps.org, a web-map and App to gather volunteered geographic information on bicycling collisions and near misses. With her team, she has developed new ways of using fitness app data (like Strava) to map bicycling volume useful for transportation planning. Nelson uses BikeMaps.org and other big data to quantify and monitor patterns of urban cycling safety and ridership.

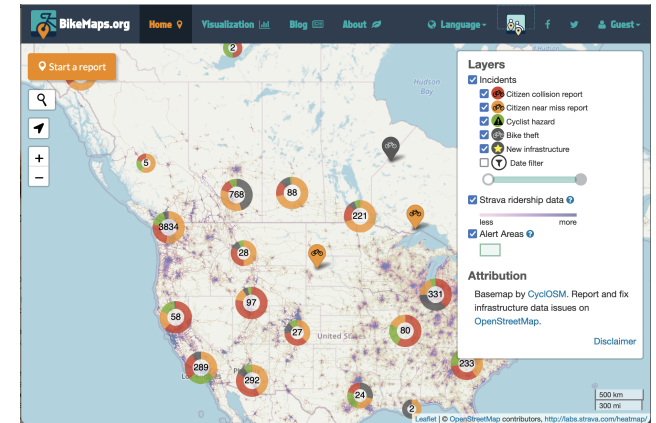
**Twitter:** @TrisalynNelson

**SPAR Lab:** <https://sparlab.org>

## RESEARCH TALK

# Crowdsourcing Data for Active Transportation

Lack of available spatial data can be a barrier to bicycling and pedestrian research and planning. Much of my team's research focuses on building novel data sources to map bicycling infrastructure, safety, and volume. In this presentation I will outline how we are using OpenStreetMaps to map bicycle infrastructure, crowdsource webmaps (BikeMaps.org and WalkRollMap.org) to map safety and access concerns, and modelling ridership using Strava data. I will discuss how crowdsource data provide unique opportunities to enhance active transportation data, but also challenges particularly around representativeness and equity.



**Join the Geospatial Lab in welcoming Dr. Trisalyn Nelson to Western University**

**Friday, July 8, 2022 • Room 1004, SSC • Beginning at 11am**

11:00 – 12:00 **Research Talk: Crowdsourcing Data for Active Transportation**

12:00 – 13:00 **Lunch (RSVP: [jed.long@uwo.ca](mailto:jed.long@uwo.ca) by June 30, 2022).**

13:00 – 14:00 **Discussion: Mapping Out a Career in Academia**

**Hosted by the Geospatial Lab: <https://geospatial.uwo.ca>**

Department of Geography and Environment

Social Science Centre, Western University